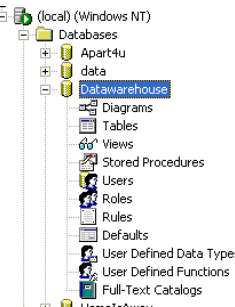


## Installing the MS SQL Data warehouse database

The following lists how to create the Database SQL database. This should be undertaken by a qualified MS SQL Database administrator. ComTek Accounts does not provide support on the creation/administration of the SQL Database. If used across a network make sure no firewalls stop communication to SQL database.

### Step 1 Create SQL Database

- 1) Start "SQL Server Enterprise Manager"
- 2) Create a new database, with appropriate database size for you data. Give the database same name as Exchequer OLE code
- 3) Now select new database:



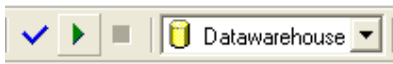
- 4) Then select "Tools >> SQL Query Analyzer"

This will open the "SQL Query Analyzer", check that the new database is selected in toolbar:



- 5) Now select "File >> Open", now browser for the data warehouse directory and select "Create Data warehouse.sql". This should then show the SQL statements to create the data structure for data warehouse.

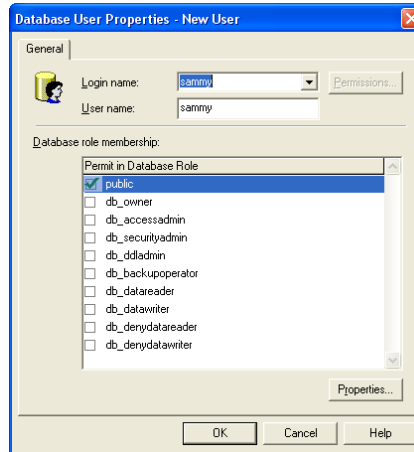
- 6) Double check you have the correct database selected and press the execute button:



- 7) This will create the database after a short delay.
- 8) Switch back to the "SQL Query Analyzer", browser tables for new database, you should now find you have a series of new tables.

## Step 2 Grant permissions to new database

1) Select “Users” in the new database, right click on right and side of window, and add new user to database:

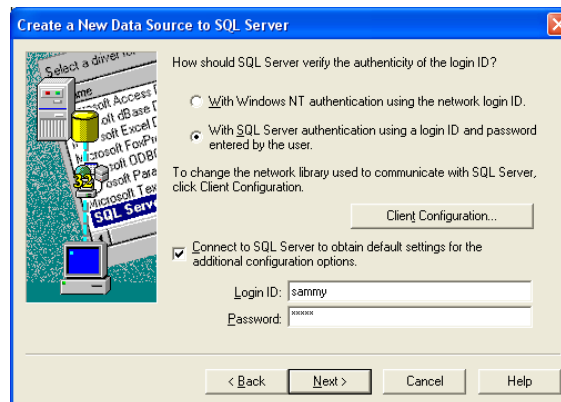


Note the Data warehouse should be full rights to database

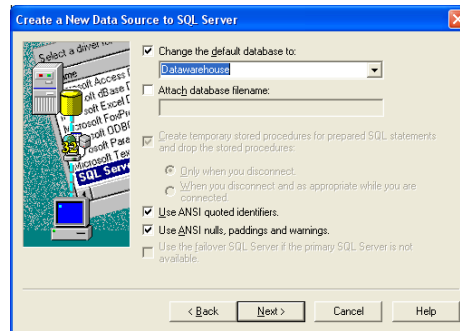
## Step 3 Create DSN on Computers

A DSN should be created on the computer used to update the SQL Database, to point to the Database.

- 1) Open “Control Panel >> Administrative Tools”, then click on “Data sources (ODBC)”
- 2) Click [Add] Button, then select SQL Server from list. If not in list then install MS SQL drivers. Then hit [Finish]
- 3) Give the DSN same name as Exchequer OLE code and select Server.
- 4) Click [Next], Click, second option down, then fill in username and password:



5) Click [Next], on next page:



Change the default Database to the new database.

6) Click [Next], [Next] then [Finish]

7) On the final window click [Test Data Source]

8) Close windows

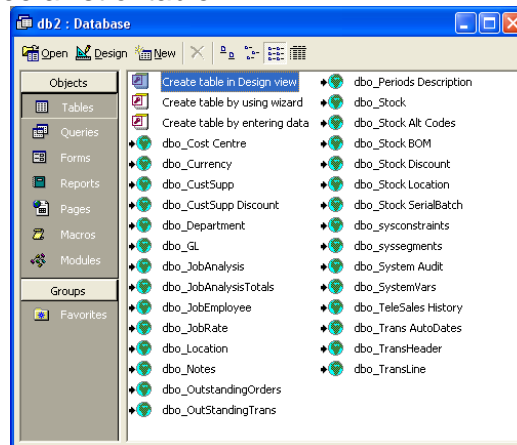
### **Step 4 Test SQL Database connection**

1) Open MS Access, create a new database. Select “File >> Get External Data >> Link Tables”. Within “Files of type” selection box, select “ODBC Data sources” then select new DSN we created, from under “Machine Data sources” Tab.

2) Login

3) Press [Select ALL], then [OK]. If asked for unique identifiers, then select first field from list.

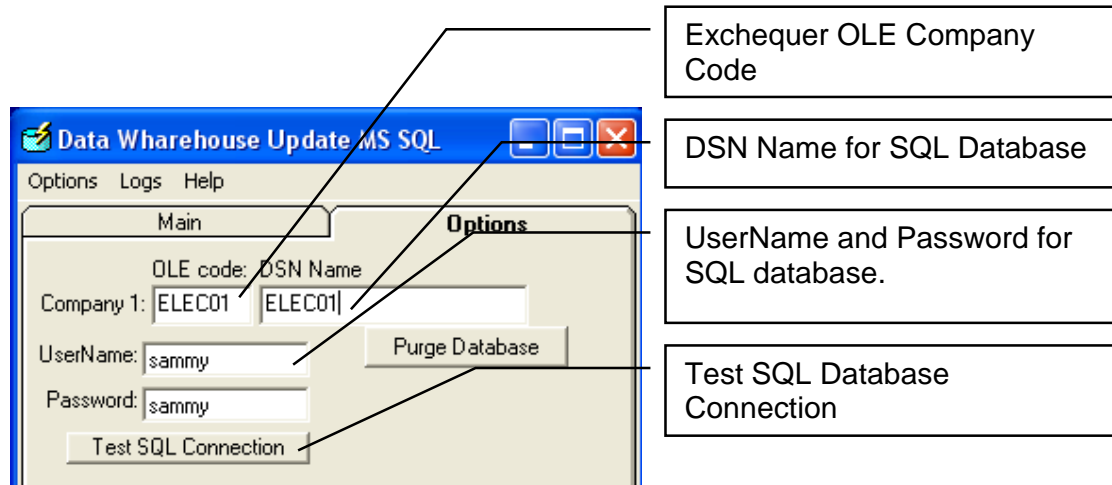
4) You should no see a list of table:



If not, check user rights etc.

## Step 5 Set-up data warehouse

Now start the Data warehouse. Under Options Tab:



Now try the [Test SQL Connection] button.

Then select "Main" Tab, and press [Export Data] to update data warehouse.

Follow instructions in main manual