

Stock Description Plug-In V2.0.0

For use with Exchequer Enterprise

The Stock Description Plug-In removes Stock Description lines from Sales or Purchase Transactions as specified in "StockDesc_Plug_Switches.ini" file.

Changing the Transaction types

The types of transaction that the Stock Description Plug-in removes lines from can be changed in "StockDesc_Plug_Switches.ini" file.

Example 1

To remove specific line numbers:

```
[General]
UseCOMToolkit= No

[RemoveFromSales]
TypeOfTransactions = ALL
FirstLine = 1
RemoveLines = 4,5,6,B
RemoveLinesBeginningWith = ""

[RemoveFromPurchases]
TypeOfTransactions = POR,PIN
FirstLine = 4
RemoveLines = 2,3,B
RemoveLinesBeginningWith = ""
```

Where:

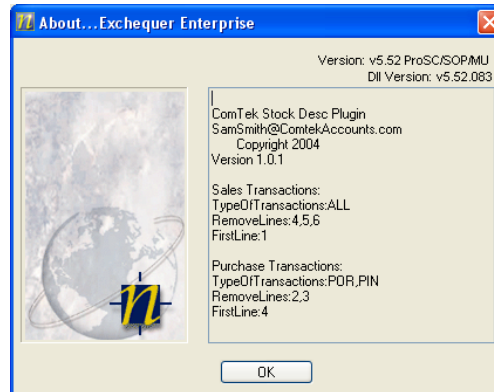
Parameter	Description
UseCOMToolkit	If set to Yes, then uses the COM Toolkit to alter transactions. This is a faster method, but requires a COM Toolkit licence for user. RECOMMENDED for transactions with a large number of transaction lines.
TypeOfTransactions	Type of Transactions to alter NONE, ALL Or (SIN SOR SQU SRI SJI SCR SJC PCR POR PQU PJC PPI PIN)
FirstLine	The line description number, which will appear in line where stock code is specified.
RemoveLines	Additional lines to remove. To remove any blank lines specify "B"
RemoveLinesBeginningWith	If specified, between the quotes, then removes lines beginning with character specified. Note : if specified then RemoveLines numbers are ignored.

In the example above, on the sales side all transactions will have lines 4,5,6 removed. So only lines 1,2 and 3 appear on Sales Transactions.

On the Purchase side only POR and PIN's will be affected. These will have top line as the 4th line on the stock description (FirstLine = 4), and have lines 2,3 removed. Only lines 4,5 and 6 will appear on POR and PIN transactions.

Note : If "FirstLine" specifies a blank description line then line 1 will remain in transaction. If stock description line starts with a space then the plug-in **WILL NOT DELETE LINE** the line.

These settings are shown in the Exchequer Enterprise Help >> About window.



Example 2

Remove all lines beginning with "." from Sales Transactions only

```
[RemoveFromSales]
TypeOfTransactions = ALL
FirstLine = 1
RemoveLines = 4,5,6,B
RemoveLinesBeginningWith = "."
```

```
[RemoveFromPurchases]
TypeOfTransactions = NONE
FirstLine = 4
RemoveLines = 2,3,B
RemoveLinesBeginningWith = ""
```

The parameter `RemoveLines` is ignored because `RemoveLinesBeginningWith` has been specified. Note this method of removal is faster than the first example when `FirstLine = 1`, because it does not have to lookup each stock record to compare the stock description lines.

Example 3

If settings are:

```
[General]
UseCOMToolkit= Yes
```

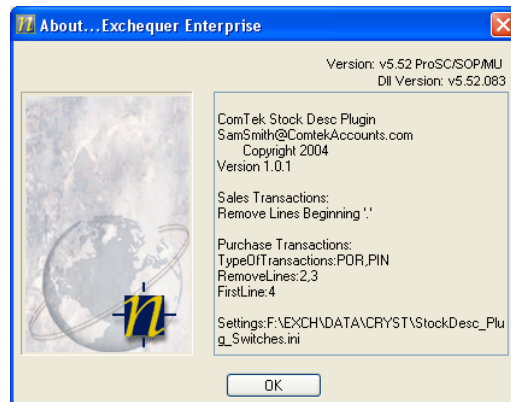
```
[RemoveFromSales]
TypeOfTransactions = ALL
FirstLine = 1
RemoveLines = 2,3,4,5,6,B
RemoveLinesBeginningWith = " "
```

```
[RemoveFromPurchases]
TypeOfTransactions = ALL
FirstLine = 1
RemoveLines = 2,3,4,5,6,B
RemoveLinesBeginningWith = " "
```

Then the program will delete all lines apart from those with stock codes on them. It does not compare lines with stock lines.

Checking System options, from with Exchequer Enterprise

These settings are shown in the Exchequer Enterprise Help >> About window.



Note: This Plug-in changes the transaction only when the user has edited or added a line to the transaction, then pressed [OK] button to commit the transaction. To activate for transactions, which have been imported, open the imported transaction and then hold down SHIT key while pressing the [OK] button to commit the transaction.

Installation, into Exchequer Enterprise

Copy the StockDesc.exe, xarraydb.ocx and Msvbvm60.dll to the Enterprise directory, from the StockDesc zip file.

Then copy StockDesc _Switches.ini to the Enterprise company data directory.

Then copy ENTCUSTM.INI to the Enterprise directory if it is not already there, else edit the existing one to contain:

```
[COMclients]
l="x:\xxxxxx\StockDesc.exe"
;Edit the above line to run StockDesc.EXE
```

DO NOT OVERITE "ENTCUSTM.INI" IF IT ALREADY EXISTS

This will make Enterprise start StockDesc.exe from the Enterprise Directory.

When enabled it will ask for registration details if not the "Electric 'R' Us" company. Please ring Comtek Accounts on 01945 464854 for registration.